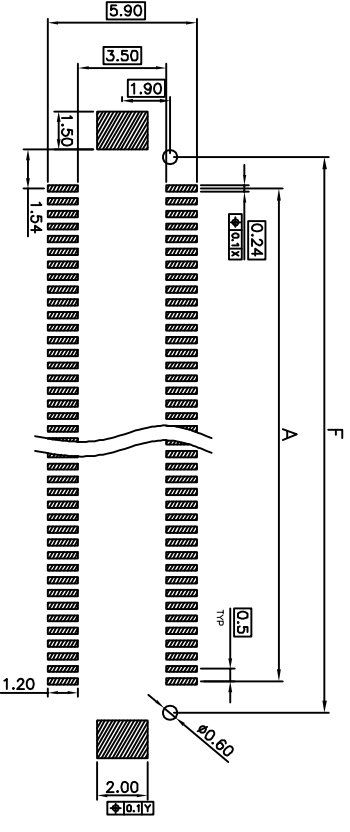
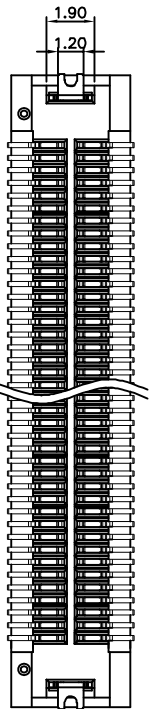
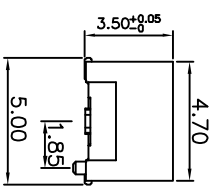
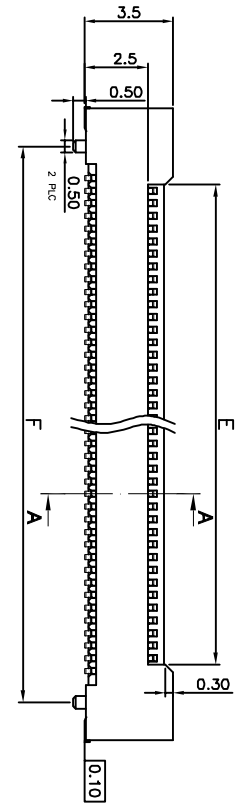
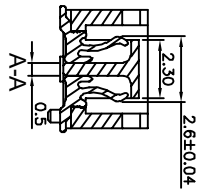
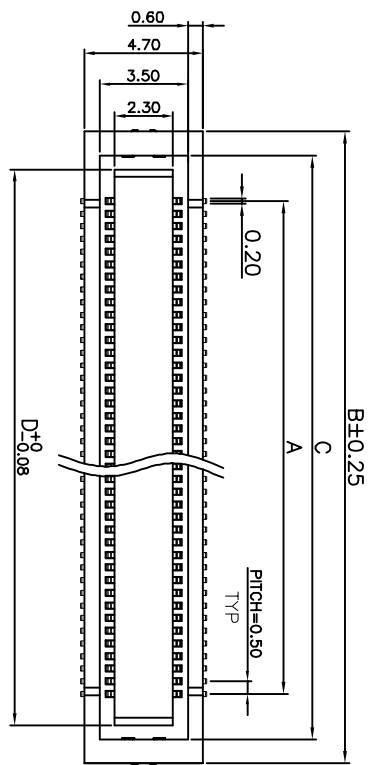



LTR	Part Name	Material	Description	QTY
1	Housing	LCP UL94V-0	+30%GF Initial : 1000M Ohms Min.	1
2	Contact	Bronze	Current Rating : 0.5 A Initial : 30m Ohms Max.	xx
3	Fitting Nail	Brass C2680	Current Rating : 0.5 A Initial : 30m Ohms Max.	2

Temperature Rating : -40°C ~ +105°C.
Dielectric Withstanding Voltage : 300 V AC/Min



 : SOLDER AREA
 TOLERANCE: ±0.05,
 RECOMMENDED PCB LAYOUT
 (TOP VIEW)

RoHS compliant

Circuit No.	Dimensions					
	A	B (A+5.5)	C (A+3.6)	D (A+2.5)	E (A-0.5)	F (A+2.5)
2*40P	19.50	25.00	23.10	22.00	19.00	22.00

THIS DRAWING IS A CONTROLLED DOCUMENT.

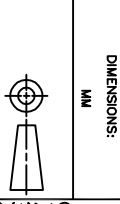
DMN	尹晚開	01SEP2023
CHK	楊廣文	01SEP2023
APVD	林振偉	01SEP2023

PH0.5 BT0B H3.5 公座

CHUFON TECH CO., LTD

SIZE	A3
QAE CODE	00779
DRAWING NO	C280000-13
RESTRICTED TO	—

C 28 00 XX -13
 Number of Contact
 80 Contact
 Series No.
 MATE WITH C2800XX-12



0 PLG	± -
1 PLG	± 0.30
2 PLG	± 0.20
3 PLG	± 0.15
ANGLES	± - ± 3°

MATERIAL SEE NOTE
FINISH SEE NOTE

QUALIFICATION TEST REPORT	WEIGHT
CUSTOMER DRAWING	SCALE

SCALE	—
SHEET	1 OF 1
REV	A0