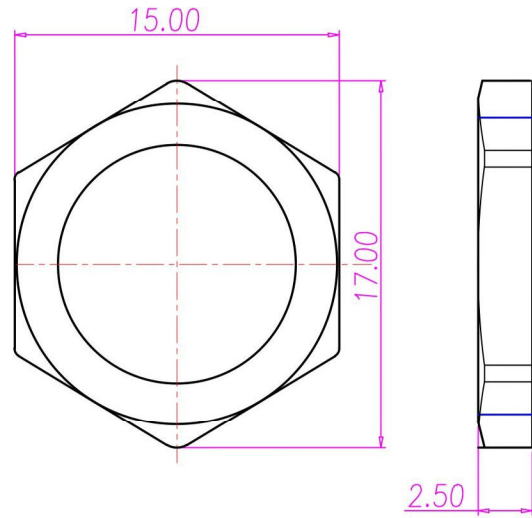


CUSTOMER DRAWING

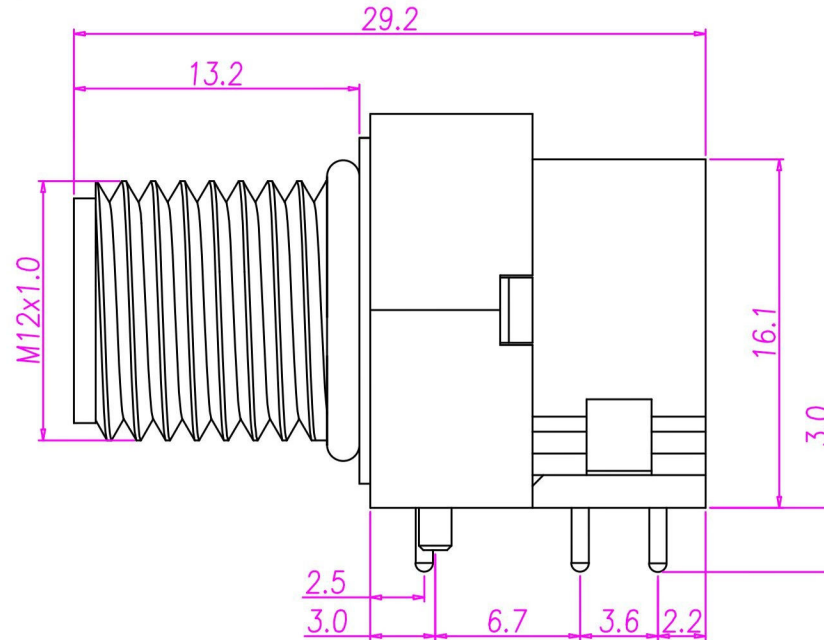
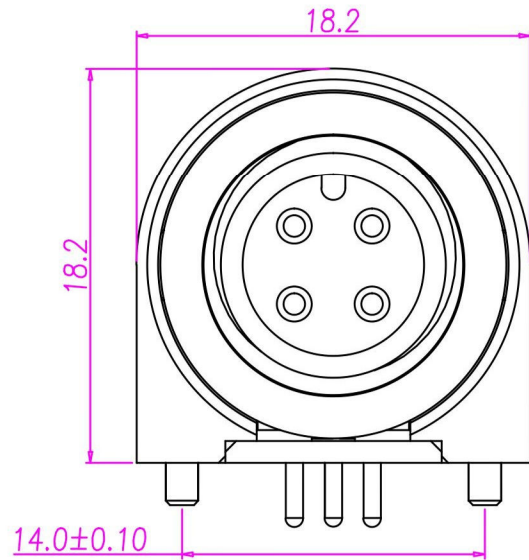
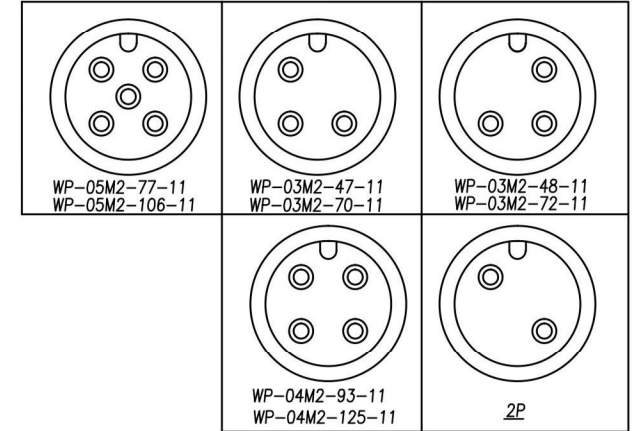
REV.	DESCRIPTION	APPROVED BY	DATE	ECN NO.
A	RELEASE	Fido Weng	22/12/08*	
B				
C				



WP-03M2-72-11	GOLD 10u"
WP-05M2-106-11	GOLD 10u"
WP-04M2-125-11	GOLD 10u"
WP-03M2-70-11	GOLD 10u"
WP-05M2-77-11	GOLD FLASH
WP-04M2-93-11	GOLD FLASH
WP-03M2-48-11	GOLD FLASH
WP-03M2-47-11	GOLD FLASH
PART NO	FINISH

NUT

SEE TABLE A



NOTE:

- MATERIAL :
  - HOUSING : PBT UL94V-0 ; COLOR : BLACK
  - CONTACT : BRASS
  - NUT : BRASS
  - O-RING : EPDM ; COLOR : BLACK
  - BACK HOUSING : PBT UL94V-0 ; COLOR : BLACK
  - DOWN HOUSING : PBT UL94V-0 ; COLOR : BLACK
- FINISH :
  - CONTACT : SEE TABLE A
  - SHELL : STAIN NICKEL 80u"~100u" ON OVER ALL
- ELECTRICAL SPECIFICATION :
  - Rated current : 5A
  - Rated Voltage : 125V
  - Water proof: IPX7
- Environmental :
  - Operation Temperature : -40°~+85°

DRAWN	APPEND	UNIT	mm	TOLERANCE	CHUFON TECH. CO., LTD.	TITLE	WATERPROOF M12*1.0 (M) 90度插端			SHEET
CHK'D		SCALE	1:1	.x ±0.20 .xx ±0.10 .xxx ±0.05 .xxxx ±0.03 ANGULA ±1°			PART NO.	SEE TABLE A	DWG NO.	QC6453