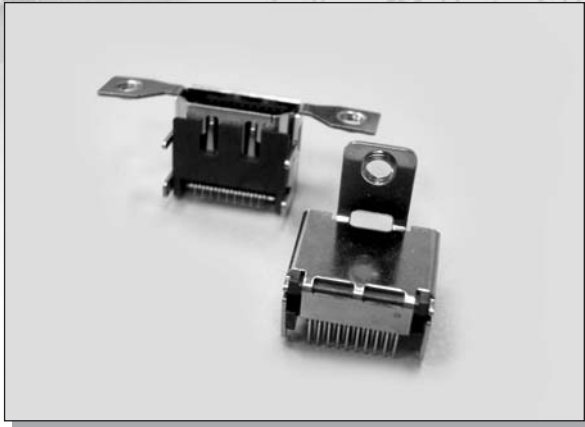


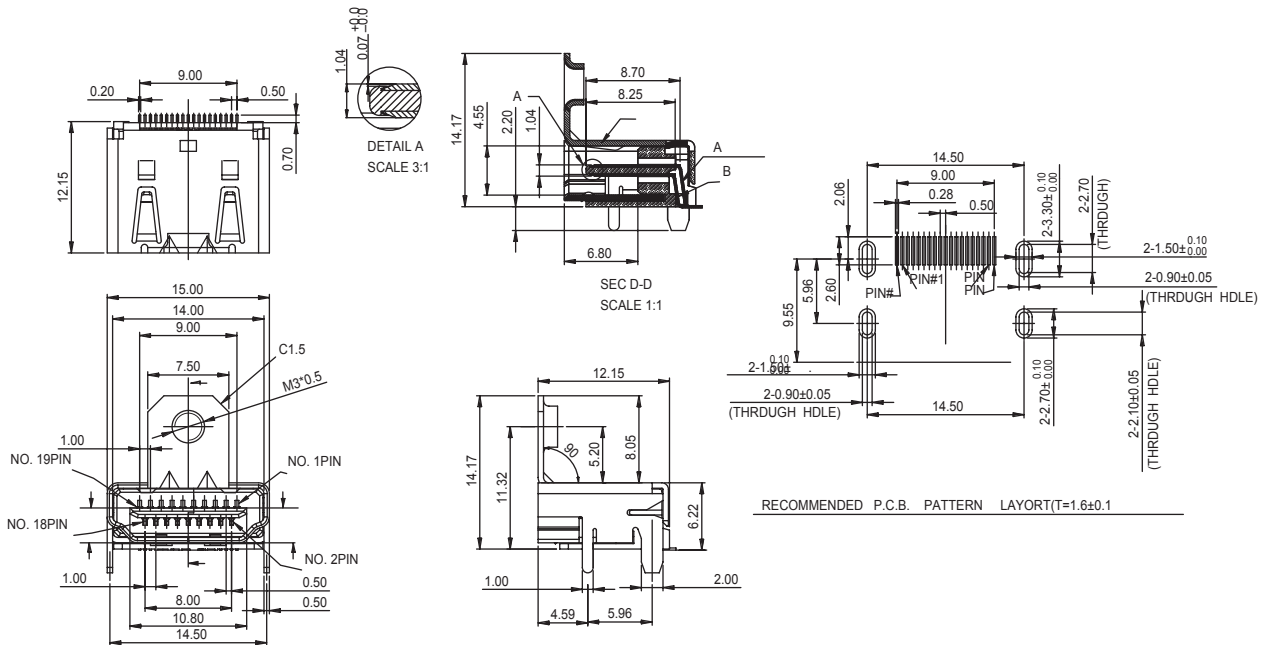
C-TEK HDMI PCB 19P W/FLANGE, R/A DIP, R/A SMT



MATERIALS :

HOUSING : TERMOPLASTIC, WITH 30%
GLASS FIBER UL94V-0, BLACK COLOR.
CONTACT : PHOSPHOR BRONZE.

DIMENSIONS



HOW TO ORDER

SERIES NO.	CONTACT NO.	CONTACT TYPE	PLATING	FLANGE	PACKAGE
9021	19 19P	R R: R/A DIP M: R/A SMT	1 S: SELECTIVE GOLD PLATED S1: SELECTIVE GOLD 15u" S2: SELECTIVE GOLD 30u"	1 1: W/TOP FLANGE DISTANCE 5.2MM 2: W/TOP FLANGE DISTANCE 7.2MM 2: W/BOTH SIDE FLANGE	T T: TUBE R: T&R TA: TRAY