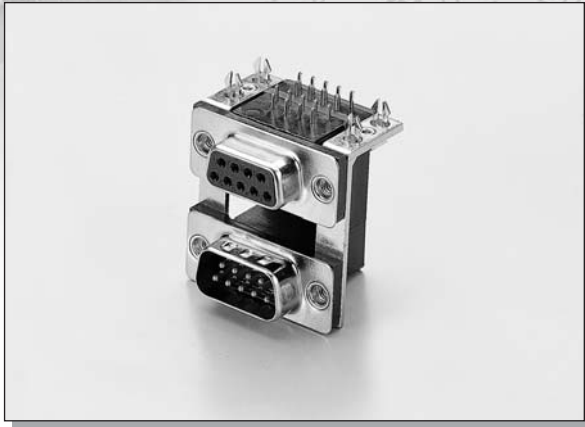


# C-TEK D-SUB R/A DUAL PORT



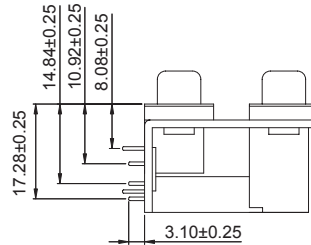
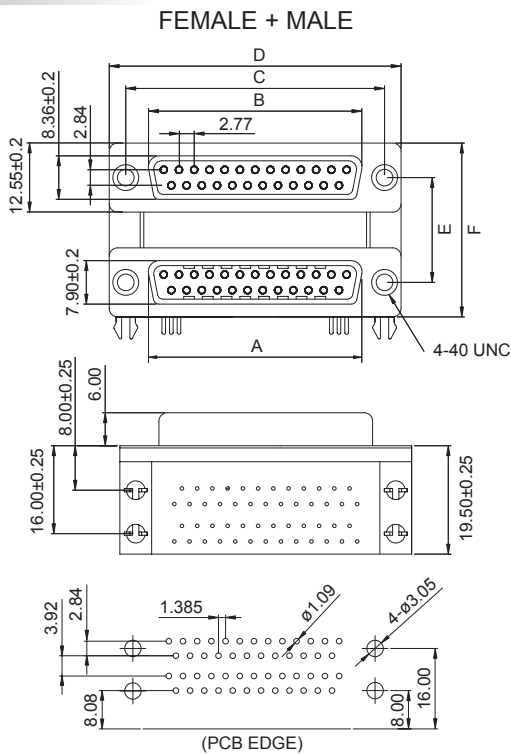
## MATERIAL:

INSULATOR : PBT + 30% GLASS FIBER (UL94V-0).  
 CONTACT : PHOSPHOR BRONZE OR BRASS.  
 (STANDARD IS BRASS)

## ELECTRICAL CHARACTERISTICS:

CURRENT RATING : 1 AMPS.  
 WITHSTANDING VOLTAGE : AC 1000V R.M.S.  
 INSULATOR RESISTANCE : 5000 MEGOHMS MIN. AT 500V DC.  
 CONTACT RESISTANCE : 20 MILLIOHMS MAX.  
 OPERATING TEMPERATURE : -55°C ~ +105°C

## DIMENSIONS



POSITION	A	B	C	D	E	F
9	16.33	16.92	24.99	30.81	22.86	35.36
					19.05	31.55
					15.88	28.38
15	24.66	25.25	33.32	39.14	22.86	35.36
					19.05	31.55
					15.88	28.38
25	38.38	38.96	47.04	53.04	22.86	35.36
					19.05	31.55
					15.88	28.38
37	54.84	55.43	63.50	69.32	22.86	35.36
					19.05	31.55
					15.88	28.38

## HOW TO ORDER

SERIES NO.	CONTACT NO.	CONTACT TYPE	PLATING	RIVET & HEX SCREW	COLOR	SCREW TYPE	STACK SPACING	HOUSING MATERIAL
1009	9	1	S	1	B	1	B	P
	9 15 25 HD15	TOP + BOTTOM 1: MALE + MALE 2: MALE + FEMALE 3: FEMALE + MALE 4: FEMALE + FEMALE	G: GOLD FLASH OVER NICKEL PLATED S: SELECTIVE GOLD PLATED	1: 4-40" INSERT/ CAPTIVE NUT WITH FEMALE 4-40" HEX SL WITH BL 2: 4-40" INSERT/ CAPTIVE NUT ATTACH FEMALE 4-40" HEX SL WITH BL 3: 4-40" INSERT/ CAPTIVE NUT WITH BL	B: BLACK U: BLUE	1: NUT: 4.8MM TOTAL LENGTH: 11.8MM 2: NUT: 4.8MM TOTAL LENGTH: 13MM 3: NUT: 5.8MM TOTAL LENGTH: 13MM	A: E=15.88MM B: E=19.05MM C: E=22.86MM	P: PBT H: HIGH TEMP