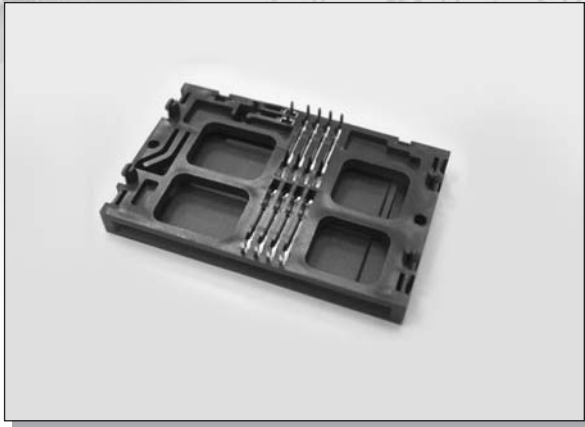


# C-TEK SMART CARD 8P PROFILE 6.8MM SLIDING DIP



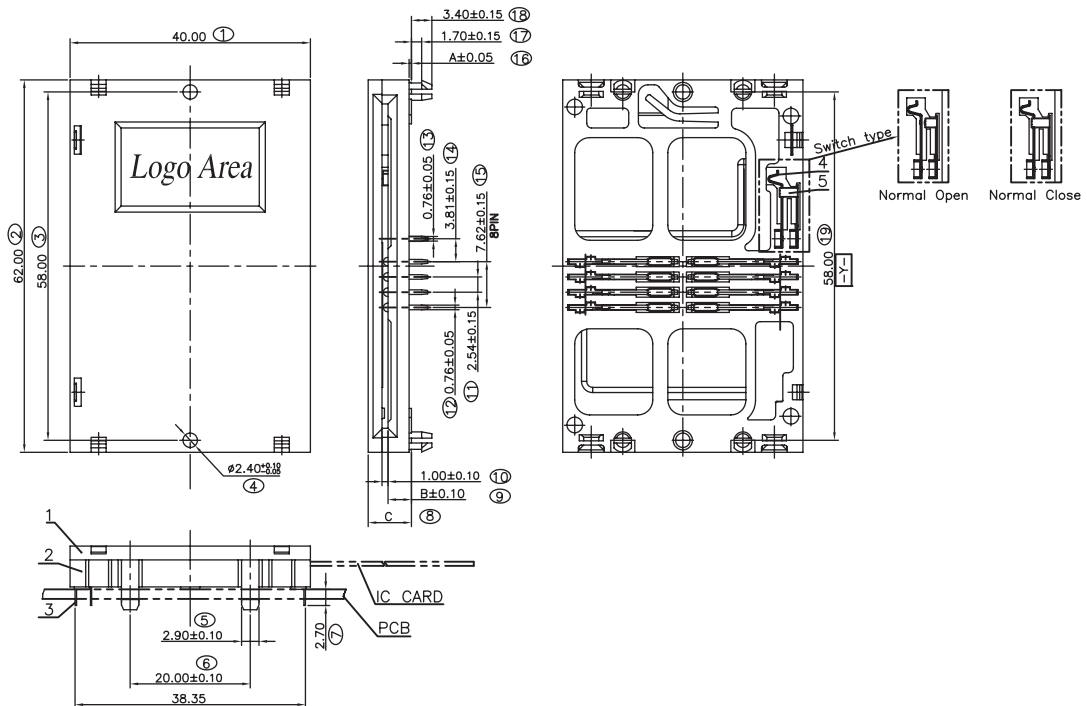
## MATERIAL:

HOUSING : PBT (UL 94V-0).  
CONTACT : PHOSPHOR BRONZE.

## SPECIFICATION:

VOLTAGE RATING : 50V DC MAX.  
CURRENT RATING : 0.5A MAX.  
OPERATING TEMPERATURE : -20°C ~ +80°C  
INSULATION RESISTANCE : 1000 MΩ MIN.  
CONTACT RESISTANCE : 100 MΩ MAX.

## DIMENSIONS



## HOW TO ORDER

SERIES NO.	CONTACT NO.	CONTACT TYPE	PLATING	SWITCH	HOUSING PROFILE
9001	8 8P, 16P	S S: SLIDING DIP	S S: SELECTIVE GOLD PLATED S1: SELECTIVE GOLD 15u" S2: SELECTIVE GOLD 30u"	O O: OPEN C: CLOSE	6.8 6.8MM