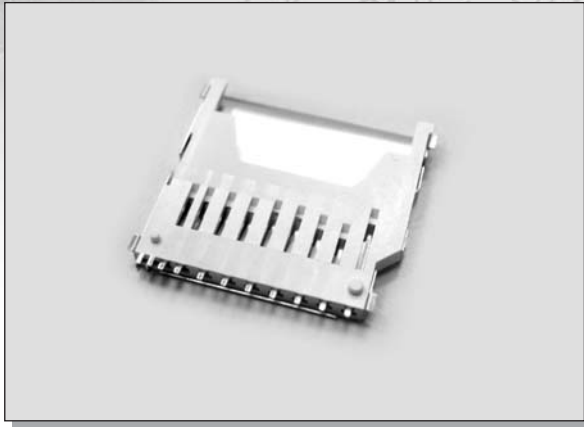


C-TEK SD MANUAL TYPE



MATERIAL:

HOUSING : THERMOPLASTIC (UL 94V-0).

CONTACT : PHOSPHOR BRONZE.

SPECIFICATION:

VOLTAGE RATING : 50V DC MAX.

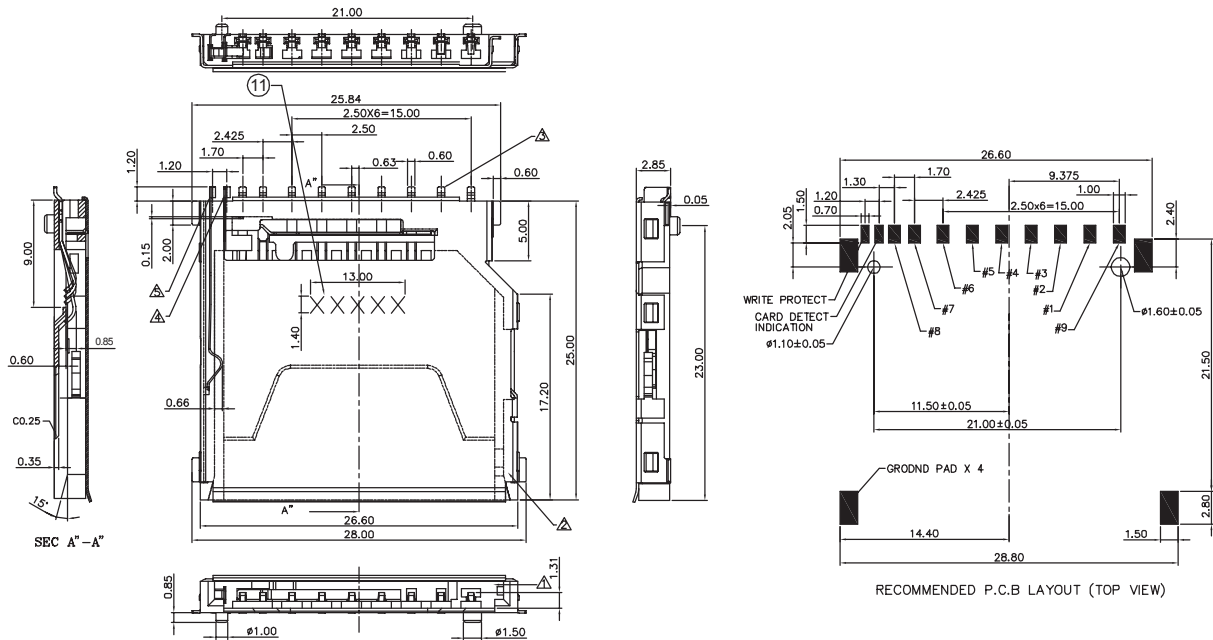
CURRENT RATING : 0.5A MAX.

OPERATING TEMPERATURE : -20°C ~ +80°C

INSULATION RESISTANCE : 1000 MΩ MIN.

CONTACT RESISTANCE : 100 MΩ MAX.

DIMENSIONS



HOW TO ORDER

| SERIES NO. | TYPE | PLATING |
|------------|------|---------|
| 8003 | M | S |

M: MANUAL TYPE
S: SELECTIVE GOLD PLATED
S1: SELECTIVE GOLD 15u"
S2: SELECTIVE GOLD 30u"