

C-TEK SCART CONNECTOR SINGLE PORT WITH TOP SCREW HOLE



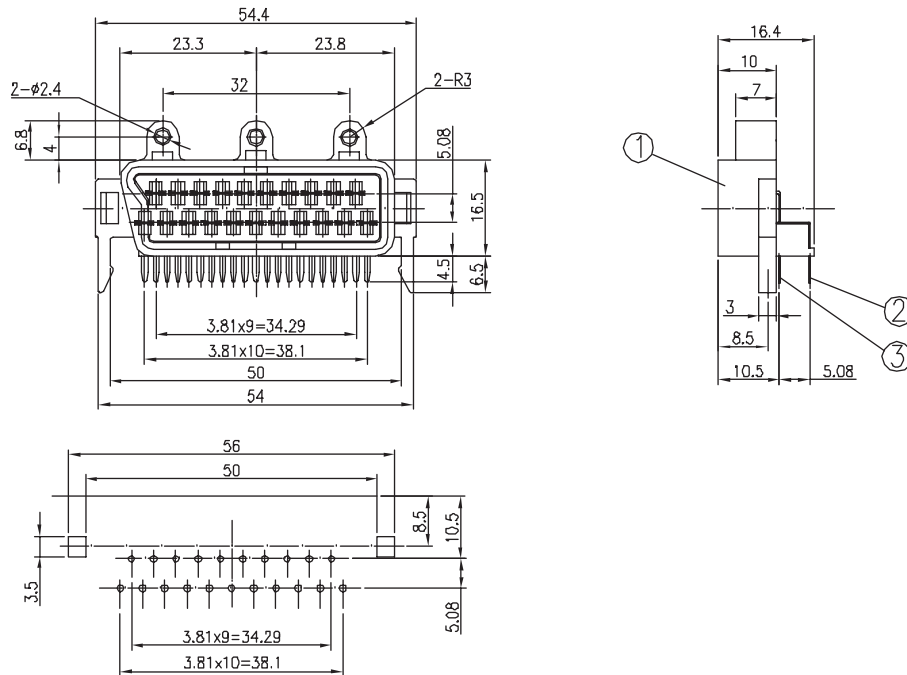
MATERIAL:

INSULATOR : ABS.
CONTACT : BRASS.

ELECTRICAL CHARACTERISTICS:

WITHSTAND VOLTAGE : AC 500V (50HZ) MIN.
CURRENT RATING : AC 50 0.2A.
CONTACT RESISTANCE : 0.02 OHM MAX.
INSULATION RESISTANCE : 100M OHM MIN.
OPERATING TEMPERATURE : -40°C TO +55°C

DIMENSIONS



T:1.6 Dimensions of PC board holes
Tolerance : ±0.1(Printed-bottom view)

HOW TO ORDER

SERIES NO.	TYPE	SHELL	PLATING	SCREW HOLE
7002	S	1	T	1
	S: SINGLE PORT	1: W/O METAL SHELL 2: W/METAL SHELL	T: TIN PLATED	1: W/TOP SCREW HOLE