

C-TEK 0.50MM PITCH FPC CONNECTOR PROFILE 0.9MM



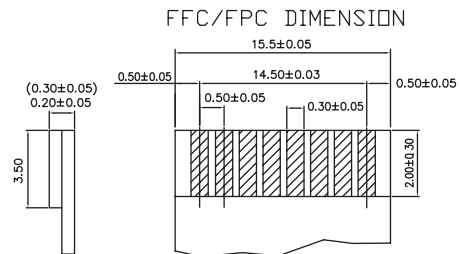
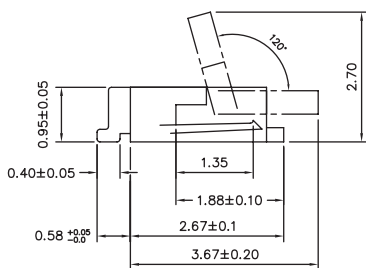
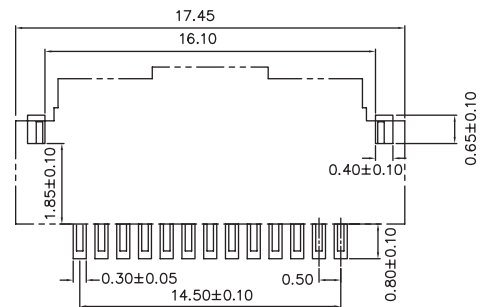
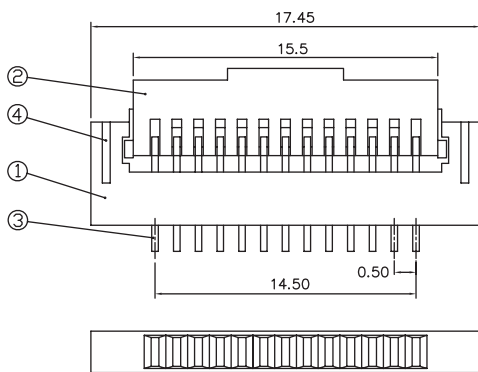
MATERIAL:

INSULATOR : NYLON.
CONTACT : PHOSPHOR BRONZE.

ELECTRICAL CHARACTERISTICS:

CURRENT RATING : 1 AMP.
WITHSTANDING VOLTAGE : AC 5000V R.M.S.
INSULATOR RESISTANCE : 1000 MEGOHMS MIN. AT 500V DC.
CONTACT RESISTANCE : 15 MILLIOHMS MAXIMUM.
OPERATING TEMPERATURE : -40°C ~ +105°C

DIMENSIONS



HOW TO ORDER

SERIES NO.	TYPE	CONTACT NO.	PLATING	CONTACT TYPE	PACKAGE	PROFILE
6005	Z	17	T	R1	T	0.9
	Z: ZIF TYPE	4 ~ 50	T: TIN PLATED	R1: R/A SMT, BOTTOM CONTACT R2: R/A SMT, TOP CONTACT	T: TUBE R: T&R	0.9: PROFILE=0.9MM