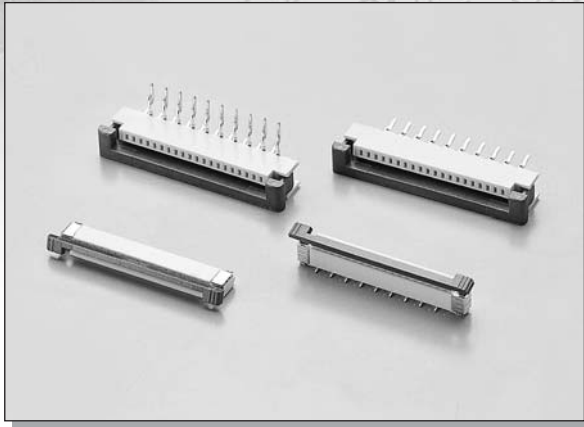


# C-TEK 1.00MM PITCH FPC CONNECTOR



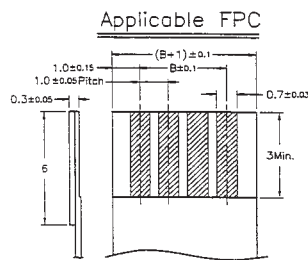
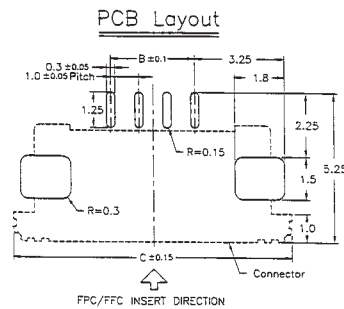
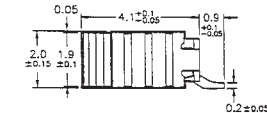
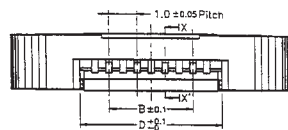
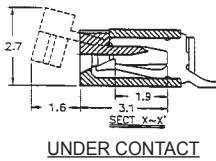
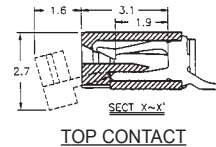
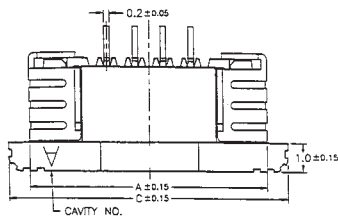
## MATERIAL:

INSULATOR : THERMOPLASTIC.  
CONTACT : PHOSPHOR BRONZE.

## ELECTRICAL CHARACTERISTICS:

CURRENT RATING : 0.5A MAX.  
VOLTAGE RATING : 50V MAX.  
OPERATING TEMPERATURE : -40°C ~ +105°C

## DIMENSIONS



CONTACT NO.	A	B	C	D
4	8.5	3	10	5.1
5	9.5	4	11	6.1
6	10.5	5	12	7.1
7	11.5	6	13	8.1
8	12.5	7	14	9.1
9	13.5	8	15	10.1
10	14.5	9	16	11.1
11	15.5	10	17	12.1
12	16.5	11	18	13.1
13	17.5	12	19	14.1
14	18.5	13	20	15.1
15	19.5	14	21	16.1
16	20.5	15	22	17.1
17	21.5	16	23	18.1
18	22.5	17	24	19.1

CONTACT NO.	A	B	C	D
19	23.5	18	25	20.1
20	24.5	19	26	21.1
21	25.5	20	27	22.1
22	26.5	21	28	23.1
23	27.5	22	29	24.1
24	28.5	23	30	25.1
25	29.5	24	31	26.1
26	30.5	25	32	27.1
27	31.5	26	33	28.1
28	32.5	27	34	29.1
29	33.5	28	35	30.1
30	34.5	29	36	31.1
31	35.5	30	37	32.1
32	36.5	31	38	33.1

## HOW TO ORDER

SERIES NO.	TYPE	CONTACT NO.	PLATING	CONTACT TYPE	PACKAGE
<b>6002</b>	<b>Z</b>	<b>17</b>	<b>T</b>	<b>S1</b>	<b>T</b>
	Z: ZIF TYPE N: NON ZIF TYPE	4 ~ 32	T: TIN PLATED	R1: R/A SMT, BOTTOM CONTACT R2: R/A SMT, TOP CONTACT S1: STRAIGHT SMT TYPE1 S2: STRAIGHT SMT TYPE2	T: TUBE R: T&R