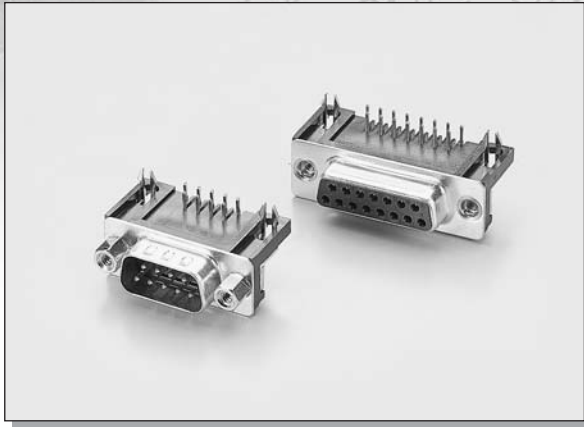


C-TEK D-SUB R/A FOOTPRINT 9.40MM



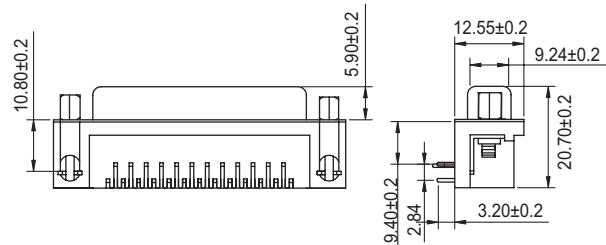
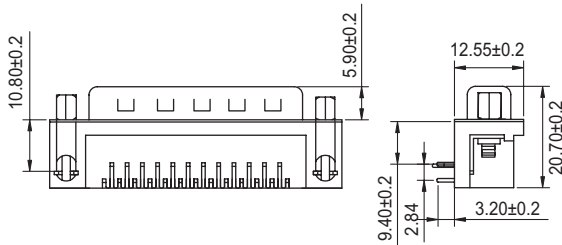
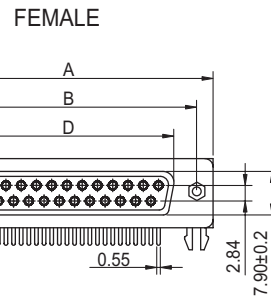
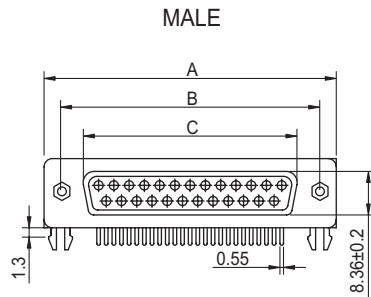
MATERIAL:

INSULATOR : PBT + 30% GLASS FIBER (UL94V-0).
 CONTACT : PHOSPHOR BRONZE OR BRASS.
 (STANDARD IS BRASS)

ELECTRICAL CHARACTERISTICS:

CURRENT RATING : 1 AMPS.
 WITHSTANDING VOLTAGE : AC 1000V R.M.S.
 INSULATOR RESISTANCE : 5000 MEGOHMS MIN. AT 500V DC.
 CONTACT RESISTANCE : 20MILLIOHMS MAX.
 OPERATING TEMPERATURE : -55°C ~ +105°C

DIMENSIONS



POSITION	A	B	C	D
9	30.81	24.99	16.92	16.33
15	39.14	33.32	25.25	24.66
25	53.04	47.04	38.96	38.38
37	69.32	63.50	55.42	54.84

HOW TO ORDER

SERIES NO.	CONTACT NO.	CONTACT TYPE	PLATING	RIVET & HEX SCREW	COLOR	SCREW TYPE	HOUSING MATERIAL
1006	15	F	S	1	B	1	P
	9 15 25 37	F: FEMALE M: MALE	G: GOLD FLASH OVER NICKEL PLATED S: SELECTIVE GOLD PLATED	1: FEMALE 4-40" HEX SCREWLOCK, FIXED DIRECT TO BL 2: 4-40" INSERT/CAPTIVE NUT WITH FEMALE 4-40" HEX SL WITH BL 3: 4-40" INSERT/CAPTIVE NUT ATTACH FEMALE 4-40" HEX SL WITH BL 4: 4-40" INSERT/CAPTIVE NUT WITH BL	B: BLACK	1: NUT: 4.8MM TOTAL LENGTH: 11.8MM 2: NUT: 4.8MM TOTAL LENGTH: 13MM 3: NUT: 5.8MM TOTAL LENGTH: 13MM	P: PBT H: HIGH TEMP