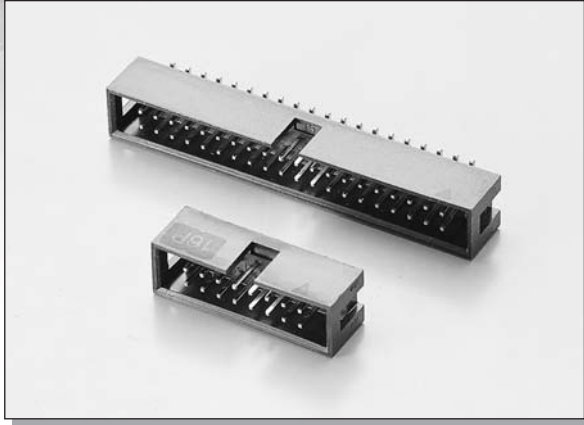


# C-TEK 2.54 / 2.00 / 1.27MM PITCH BOX HEADER



## MATERIAL:

INSULATOR : PBT + 30% GLASS FIBER (UL94V-0).

CONTACT : PHOSPHOR BRONZE OR BRASS.  
(STANDARD IS BRASS)

## ELECTRICAL CHARACTERISTICS:

CURRENT RATING : 1 AMP.

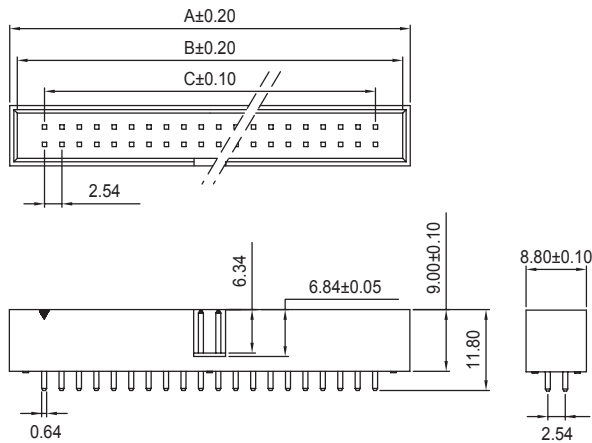
INSULATOR RESISTANCE : 5000 MEGOHMS MIN. AT 500V DC.

CONTACT RESISTANCE : 20 MILLIOHMS MAX.

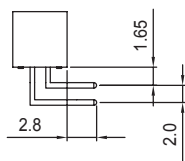
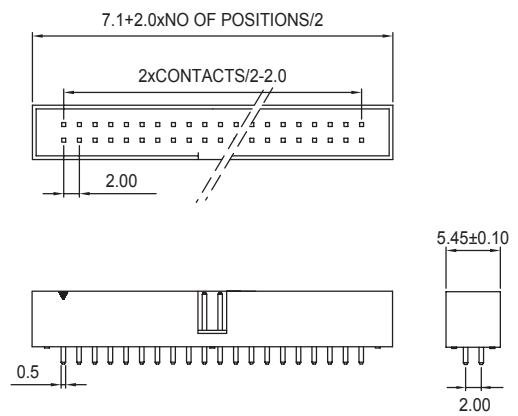
OPERATING TEMPERATURE : -55°C ~ +105°C

## DIMENSIONS

2.54MM BOX HEADER



2.00MM BOX HEADER



NO. OF PINS	A	B	C
8	17.66	15.36	7.62
10	20.32	18.02	10.16
14	25.40	23.10	15.24
16	27.94	25.64	17.78
20	33.02	30.72	22.86
24	38.10	35.80	27.94
26	40.64	38.34	30.48

NO. OF PINS	A	B	C
30	45.72	43.42	35.56
34	50.80	48.50	40.64
40	58.42	56.12	48.26
50	71.12	68.82	60.96
60	83.82	81.52	73.66
64	88.90	86.60	78.74

## HOW TO ORDER

SERIES NO.

5008

PITCH

A

A: 2.54MM  
B: 2.00MM  
C: 1.27MM x 1.27MM  
D: 1.27MM X 2.54MM

CONTACT NO.

10

8 ~ 64

CONTACT TYPE

R

R: R/A  
S: STRAIGHT  
M: SMT

PLATING

G

G: GOLD PLATED  
S: SELECTIVE GOLD PLATED

HOUSING MATERIAL

P

P: PBT  
H: HIGH TEMP.

COLOR

B

B: BLACK  
U: BLUE  
W: WHITE  
G: GRAY