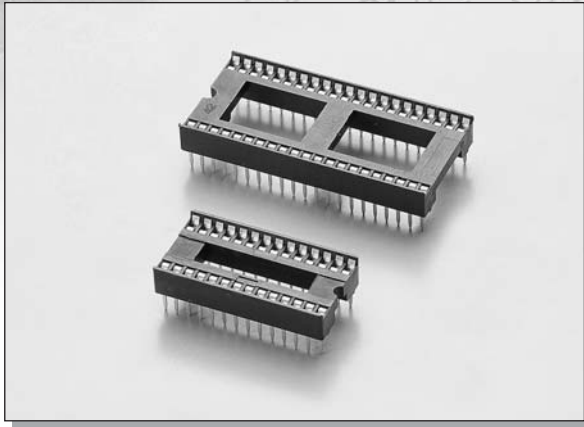


C-TEK 1.778MM PITCH IC SOCKET



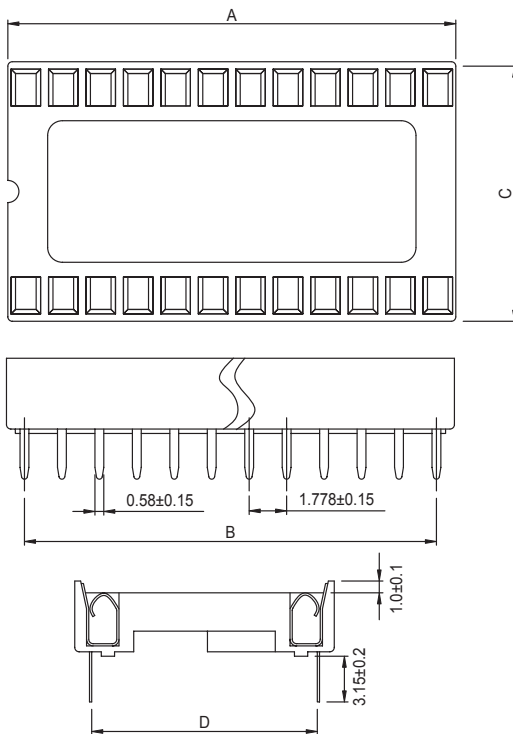
MATERIAL:

INSULATOR : PBT + 30% GLASS FIBER,
UL 94V-0 RATED.
CONTACT : PHOSPHOR BRONZE.

ELECTRICAL CHARACTERISTICS:

CURRENT RATING : 1 AMP.
WITHSTANDING VOLTAGE : AC 750V R.M.S.
INSULATOR RESISTANCE : 5000 MEGOHMS MIN.
CONTACT RESISTANCE : 20 MILLIOHMS MAX.
OPERATING TEMPERATURE : -55°C ~ +105°C

DIMENSIONS



NO. OF PINS	A±0.2	B±0.2	C±0.2	D±0.2
16	14.22	12.45	10.10	7.62
20	17.78	16.00	10.10	7.62
22	19.56	17.78	10.10	7.62
24	21.34	19.56	10.10	7.62
24	21.34	19.56	12.56	10.16
28	24.89	23.11	12.65	10.16
30	26.67	24.89	12.56	10.16
32	28.45	26.67	12.65	10.16
40	35.56	33.78	17.70	15.24
42	37.34	35.56	17.70	15.24
48	42.67	40.89	17.70	15.24
52	46.23	44.45	17.70	15.24
54	48.01	46.23	17.70	15.24
56	49.78	48.01	17.70	15.24
64	56.90	55.12	21.55	19.05

HOW TO ORDER

SERIES NO.	ROW SPACING	CONTACT NO.	PLATING	TYPE
4004	3	16	T	1
	3: 0.3" (7.62MM) 4: 0.4" (10.16MM) 6: 0.6" (15.24MM) 9: 0.9" (22.86MM)	16 20 22 24 28 30 32 40 42 48 52 54 56 64	T: TIN PLATED	1: W/O BAR 2: W/BAR