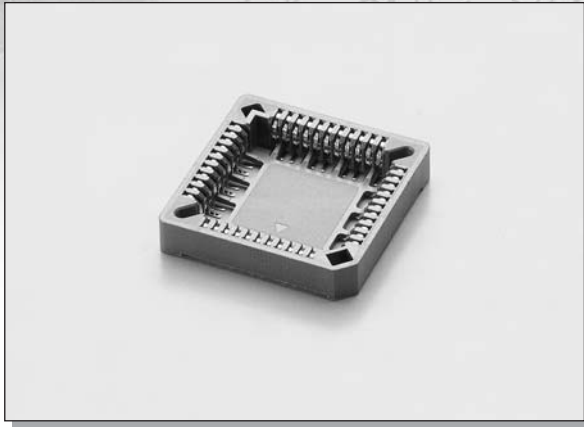


C-TEK PLCC SOCKET SMT TYPE



MATERIAL:

INSULATOR : PPS + 30% GLASS FIBER (UL94V-0).

CONTACT : PHOSPHOR BRONZE.

ELECTRICAL CHARACTERISTICS:

CURRENT RATING : 5 AMPS.

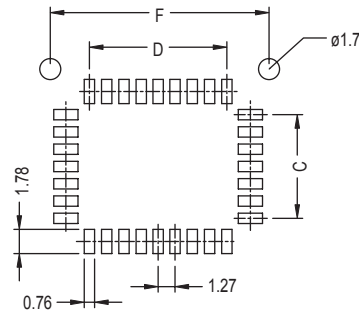
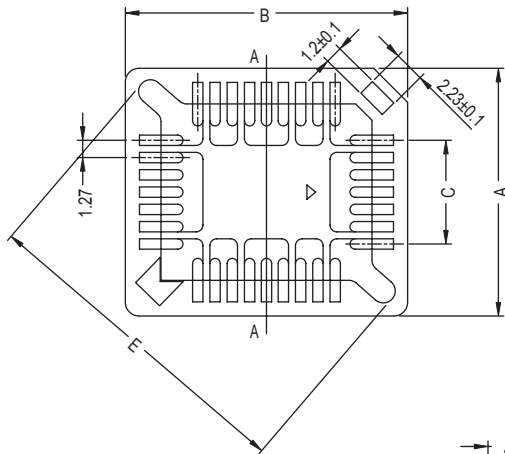
WITHSTANDING VOLTAGE : AC 1250V R.M.S.

INSULATOR RESISTANCE : 5000 MEGOHMS MIN.
AT 500V DC.

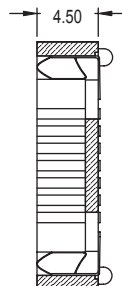
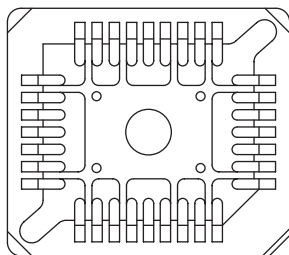
CONTACT RESISTANCE : 15 MILLIOHMS MAX.

OPERATING TEMPERATURE : -55°C ~ +105°C.

DIMENSIONS



RECOMMENDED P.C.B. PAD LAYOUT



SECTION A-A

CONTACT	A±0.2	B±0.2	C±0.2	D±0.2	E±0.2	F±0.2
20	15.24	15.24	5.08	5.08	16.70	12.70
28	17.78	17.78	7.62	7.62	20.30	15.24
32	18.20	20.74	7.62	10.16	22.76	17.78
44	23.28	23.28	12.70	12.70	28.05	20.32
52	25.40	25.40	15.24	15.24	31.10	22.86
68	30.82	30.82	20.32	20.32	38.30	27.94
84	35.90	35.90	25.40	25.40	45.50	33.02

HOW TO ORDER

SERIES NO.

4002

CONTACT NO.

32

20 28 32 44
52 68 84

PLATING

T

T: TIN PLATED
G: GOLD 3u"

PEG

1

1: W/O PEG
2: W/PEG

PACKAGE

T

T: TUBE