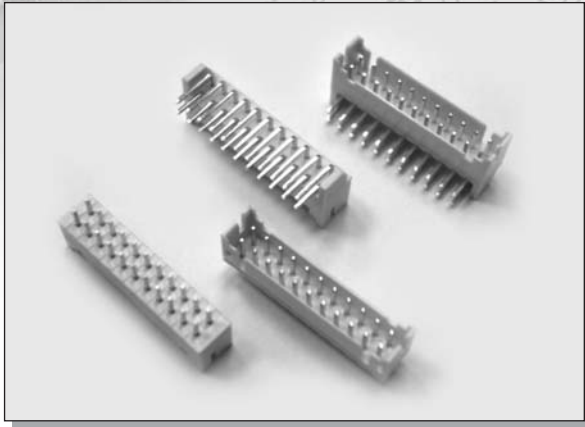


# C-TEK 2.00MM PITCH JST PHD WIRE TO BOARD



## MATERIAL:

INSULATOR : NYLON-6T, UL94-V0.

CONTACT : BRASS.

## ELECTRICAL CHARACTERISTIC

CURRENT RATING : 3A AC/DC.

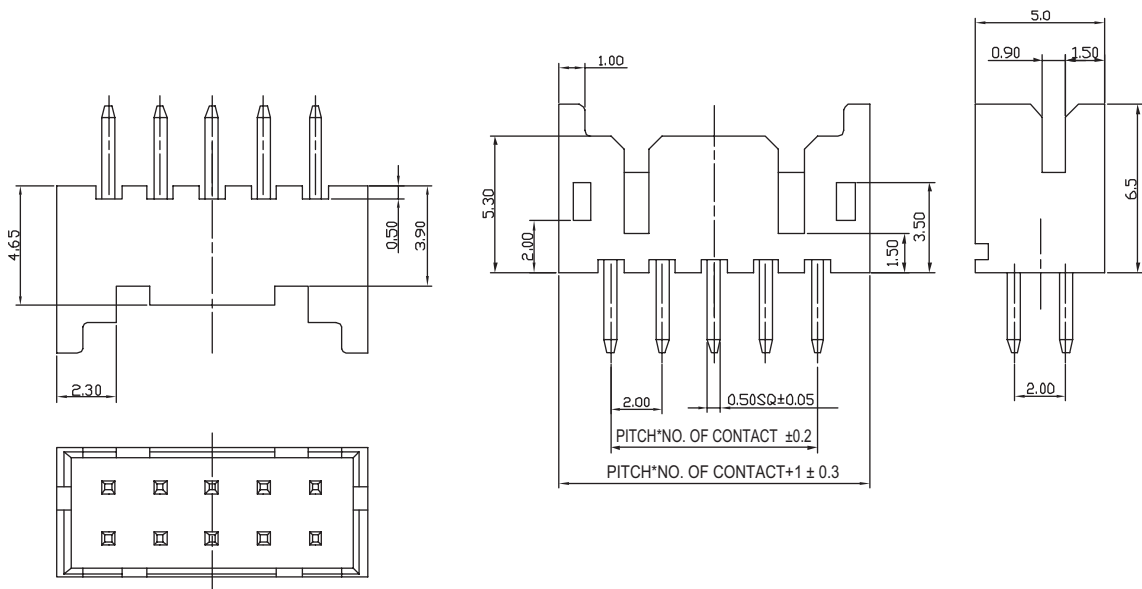
VOLTAGE RATING : 250V AC / DC.

INSULATION RESISTANCE : 1000 MEGOHMS MIN.

WITHSTANDING VOLTAGE : 800V AC / MINUTE.

OPERATING TEMPERATURE : -25°C TO 85°C

## DIMENSIONS



## HOW TO ORDER

### HOUSING

### TERMINAL

SERIES NO.	CONTACT NO.	CONTACT TYPE	PLATING	SERIES NO.	CONTACT NO.	SERIES NO.	PLATING
<b>3013</b>	<b>2 x 3</b> 2x2 - 2x16	<b>R</b> R: R/A S: STRAIGHT	<b>T</b> T: TIN PLATED	<b>3013A</b>	<b>2 x 3</b> 2x3 - 2x16	<b>3013A</b>	<b>T</b> T: TIN PLATED