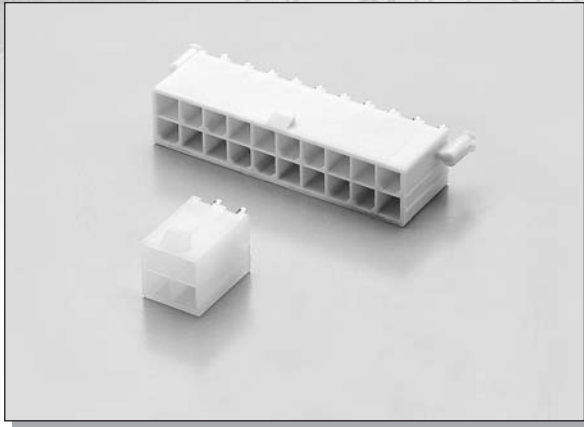


# C-TEK 4.2MM MINI FIT POWER CONNECTOR



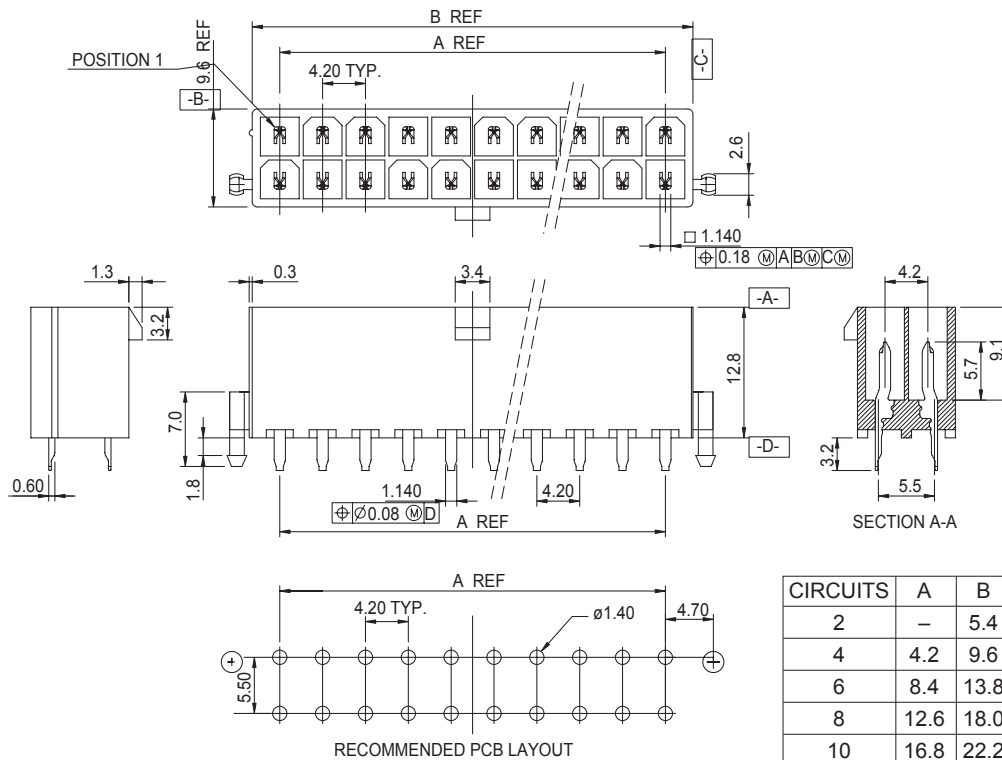
## MATERIAL:

INSULATOR : THERMOPLASTIC,  
UL94V-0.  
CONTACT : BRASS.

## ELECTRICAL CHARACTERISTICS:

VOLTAGE RATING : 250V AC R.M.S.  
CURRENT RATING : 9 AMP.  
INSULATION RESISTANCE : 20 MILLIOHMS MAX.

## DIMENSIONS



CIRCUITS	A	B	CIRCUITS	A	B
2	-	5.4	14	25.2	30.6
4	4.2	9.6	16	29.4	34.8
6	8.4	13.8	18	33.6	39.0
8	12.6	18.0	20	37.8	43.2
10	16.8	22.2	22	42.0	47.4
12	21.0	26.4	24	46.2	51.6

## HOW TO ORDER

SERIES NO.	CONTACT TYPE	MOUNTING TYPE	PLATING	POST	COLOR
<b>3002</b>	<b>20</b> 2 - 24	<b>S</b> R: R/A DIP S: STRAIGHT DIP	<b>T</b> T: TIN PLATED	<b>1</b> 1: W/O POST 2: W/POST	<b>W</b> W: WHITE T: TRANSPARENT