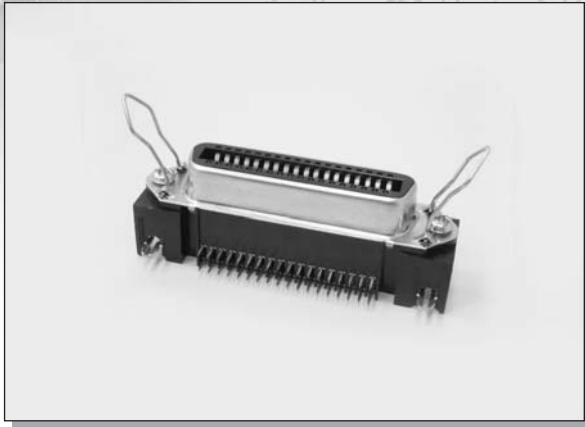


C-TEK CENTRONIC PCB R/A DIP TYPE



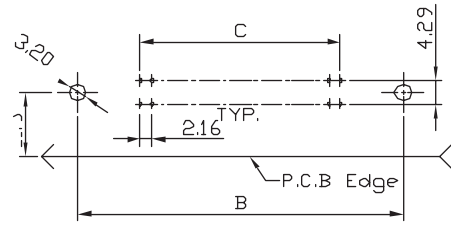
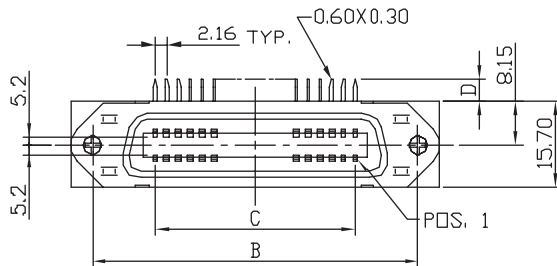
MATERIAL:

INSULATOR : PBT + 30% GLASS FIBER (UL94V-0).
 CONTACT : PHOSPHOR BRONZE OR BRASS.
 (STANDARD IS BRASS)

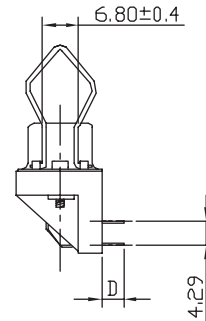
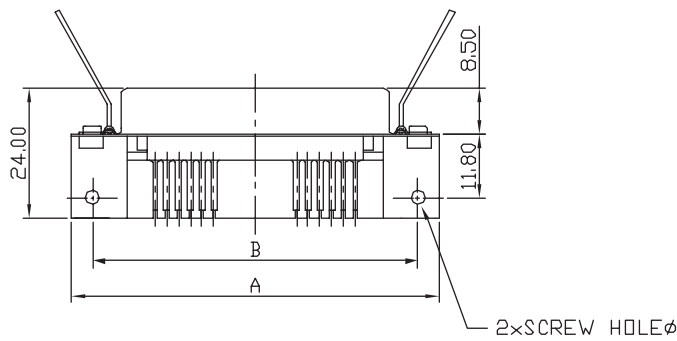
ELECTRICAL CHARACTERISTICS:

CURRENT RATING : 5 AMPS.
 WITHSTANDING VOLTAGE : AC 1250V R.M.S.
 INSULATOR RESISTANCE : 5000 MEGOHMS MIN. AT 500V DC.
 CONTACT RESISTANCE : 15 MILLIOHMS MAX.
 OPERATING TEMPERATURE : -55°C ~ +105°C

DIMENSIONS



Recommended P.C.B Layout



HOW TO ORDER

SERIES NO.	CONTACT NO.	CONTACT TYPE	PLATING	SHELL	COLOR	LATCH	HOUSING MATERIAL
1019	36 14 24 36 50	F F: FEMALE M: MALE	S S: SELECTIVE GOLD PLATED	M M: METAL SHELL	U U: BLUE B: BLACK	1 1: W/O LATCH 2: W/LATCH	P P: PBT H: HIGH TEMP