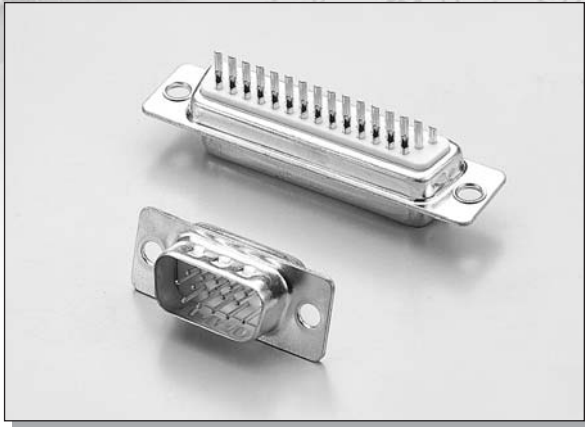


C-TEK D-SUB HIGH DENSITY SOLDER TYPE



MATERIAL:

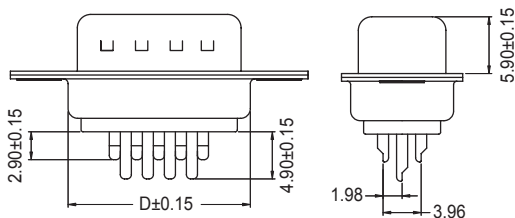
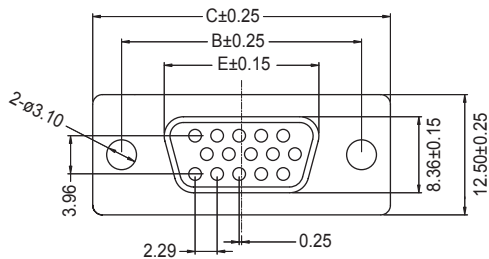
INSULATOR : PBT + 30% GLASS FIBER (UL94V-0).
 CONTACT : PHOSPHOR BRONZE OR BRASS.
 (STANDARD IS BRASS)

ELECTRICAL CHARACTERISTICS:

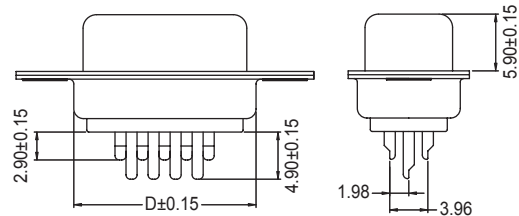
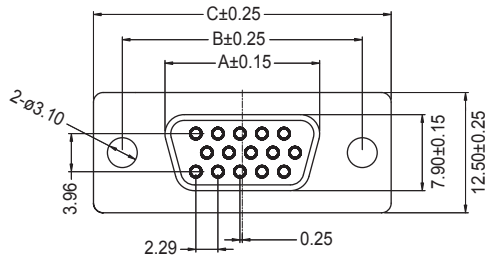
CURRENT RATING : 5 AMPS.
 WITHSTANDING VOLTAGE : AC 1250V R.M.S.
 INSULATOR RESISTANCE : 5000 MEGOHMS MIN. AT 500V DC.
 CONTACT RESISTANCE : 15 MILLIOHMS MAX.
 OPERATING TEMPERATURE : -55°C ~ +105°C

DIMENSIONS

MALE



FEMALE



POSITION	A	B	C	D	E
15	16.30	25.00	30.80	19.20	16.92
26	24.60	33.30	39.20	27.70	25.25
44	38.30	47.10	53.10	41.10	38.25
62	54.80	63.50	69.40	57.30	55.42

HOW TO ORDER

SERIES NO.	CONTACT NO.	CONTACT TYPE	PLATING	ACCESSORIES	COLOR	HOUSING MATERIAL
1013	15	F	S	1	B	P
	15 26 44 62 78	F: FEMALE M: MALE	G: GOLD FLASH OVER NICKEL PLATED S: SELECTIVE GOLD PLATED	1: W/O BOARDLOCK, NUT, SCREW 2: W/FRONT NUT 3: W/REAR NUT 4: W/BOARDLOCK 5: W/SCREW, BOARDLOCK	B: BLACK W: WHITE	P: PBT H: HIGH TEMP